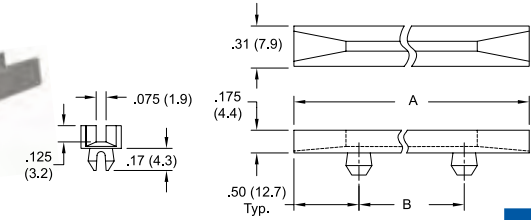


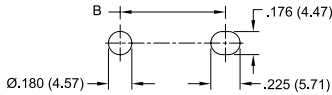


STANDARD PCB CARD GUIDES & PULLERS

RSDC  
Snap-In Card Guide



Recommended Mounting Holes

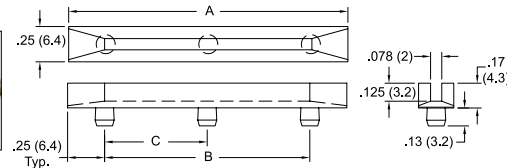


Mounts into Panel Thickness: .047 - .090 (1.2 - 2.3)

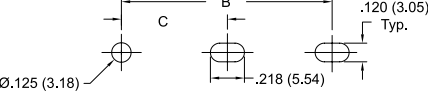
- Tapered on both ends to ease insertion of the PC board
- Material: UL94 V-2 Nylon 6/6
- Color: Natural

Item No.	A Ref.	B	Accepts PCB Thickness	Bulk Pack Qty.
RSDC-250	2.5 (63.5)	1.5 (38.1)	.062 (1.6)	500
RSDC-300	3.0 (76.2)	2.0 (50.8)	.062 (1.6)	500
RSDC-350	3.5 (88.9)	2.5 (63.5)	.062 (1.6)	500
RSDC-400	4.0 (101.6)	3.0 (76.2)	.062 (1.6)	500
RSDC-450	4.5 (114.3)	3.5 (88.9)	.062 (1.6)	500
RSDC-500	5.0 (127)	4.0 (101.6)	.062 (1.6)	500
RSDC-550	5.5 (139.7)	4.5 (114.3)	.062 (1.6)	500
RSDC-600	6.0 (152.4)	5.0 (127)	.062 (1.6)	500
RSDC-650	6.5 (164.1)	5.5 (139.7)	.062 (1.6)	500
RSDC-700	7.0 (177.8)	6.0 (152.4)	.062 (1.6)	500
RSDC-750	7.5 (190.5)	6.5 (165.1)	.062 (1.6)	500
RSDC-800	8.0 (203.2)	7.0 (177.8)	.062 (1.6)	500

RN  
Narrow Card Guide



Recommended Mounting Holes

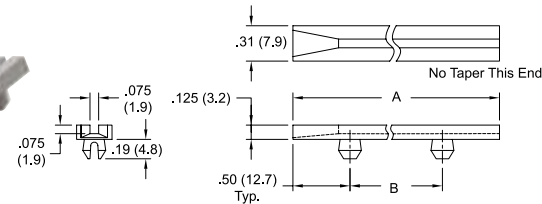


Mounts into Panel Thickness: .047 - .085 (1.2 - 2.2)

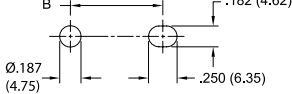
- Narrow width allows for higher density or optimum air flow
- Material: UL94 V-2 Nylon 6/6
- Color: Natural

Item No.	A	B	C	Accepts PCB Thickness	Bulk Pack Qty.
RN-250-2	2.5 (63.5)	2.0 (50.8)	-	.062 (1.6)	500
RN-300-2	3.0 (76.2)	2.5 (63.5)	-	.062 (1.6)	500
RN-350-2	3.5 (88.9)	3.0 (76.2)	-	.062 (1.6)	500
RN-400-2	4.0 (101.6)	3.5 (88.9)	-	.062 (1.6)	500
RN-450-2	4.5 (114.3)	4.0 (101.6)	-	.062 (1.6)	500
RN-500-2	5.0 (127)	4.5 (114.3)	-	.062 (1.6)	500
RN-550-2	5.5 (139.7)	5.0 (127)	-	.062 (1.6)	500
RN-600-2	6.0 (152.4)	5.5 (139.7)	-	.062 (1.6)	500
RN-650-2	6.5 (164.1)	6.0 (152.4)	-	.062 (1.6)	500
RN-700-3	7.0 (177.8)	6.5 (164.1)	3.25 (82.2)	.062 (1.6)	500
RN-750-3	7.5 (190.5)	7.0 (177.8)	3.50 (88.5)	.062 (1.6)	500
RN-800-3	8.0 (203.2)	7.5 (190.5)	3.75 (94.9)	.062 (1.6)	500
RN-850-3	8.5 (215.9)	8.0 (203.2)	4.0 (101.6)	.062 (1.6)	500

RSFS  
Snap-In Card Guide



Recommended Mounting Holes

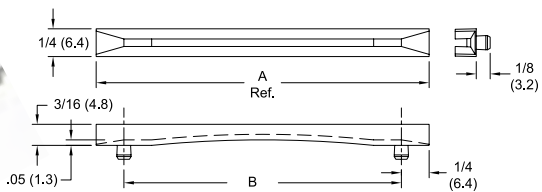


Mounts into Panel Thickness: .047 - .090 (1.2 - 2.3)

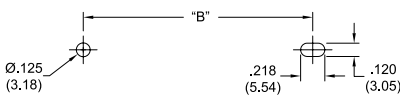
- Material: UL94 V-2 Nylon 6/6
- Color: Natural

Item No.	A	B	Accepts PCB Thickness	Bulk Pack Qty.
RSFS-250	2.5 (63.5)	1.5 (38.1)	.062 (1.6)	500
RSFS-300	3.0 (76.2)	2.0 (50.8)	.062 (1.6)	500
RSFS-350	3.5 (88.9)	2.5 (63.5)	.062 (1.6)	500
RSFS-400	4.0 (101.6)	3.0 (76.2)	.062 (1.6)	500
RSFS-450	4.5 (114.3)	3.0 (76.2)	.062 (1.6)	500
RSFS-451	4.5 (114.3)	3.5 (88.9)	.062 (1.6)	500
RSFS-500	5.0 (127)	4.0 (101.6)	.062 (1.6)	500
RSFS-550	5.5 (139.7)	4.5 (114.3)	.062 (1.6)	500
RSFS-600	6.0 (152.4)	5.0 (127.0)	.062 (1.6)	500
RSFS-700	7.0 (177.8)	6.0 (152.4)	.062 (1.6)	500
RSFS-800	8.0 (203.2)	7.0 (177.8)	.062 (1.6)	500

RCG  
Rack Card Guide



Recommended Mounting Holes



Mounts into Panel Thickness: .062 (1.6)

- Tapered on both ends to ease insertion of the PC board
- Material: UL94 V-2 Nylon 6/6
- Color: Natural

Item No.	A Ref.	B	Accepts PCB Thickness	Bulk Pack Qty.
RCG-1	3.0 (76.2)	2.5 (63.5)	.062 (1.6)	500
RCG-2	4.0 (101.6)	3.5 (88.9)	.062 (1.6)	500
RCG-3	6.0 (152.4)	5.5 (139.7)	.062 (1.6)	500
RCG-4	8.5 (215.9)	8.0 (203.2)	.062 (1.6)	500